

Fiberoptic Bronchoscopes

The high image quality by ACUTRONIC bronchoscopes is guaranteed by the use of the latest image bundle technologies and superior optical systems for both, lenses and eye piece. The suction valve fibre and the working channels inlet have been optimally placed for comfortable handling without fatigue, even in long lasting use. Sensitive but stable controls allow twist-free shafts to be distally deflected with a small bending radius and provide for optimal manoeuvring of the forceps. The removable valves allow easy access to the channels. Optimal cleaning and disinfection lead to improved protection of the patient against infection.



Specifications

- > High quality optical system
- > Large, bright and clear images
- > High light efficiency due to the application of high performance light fibers
- > Insertion tube with optimal combination of flexibility and resistance to twisting
- > High suction performance
- > Improved hygiene
- > Detachable light guide cable enables use with any endoscopic light source
- > Completely immersible in disinfectant
- > Gas sterilizable

CE 0124

ACUTRONIC Medical Systems AG

Fabrik im Schiffli | 8816 Hirzel | Switzerland | Phone ++41 44 729 70 80 | Fax ++41 44 729 70 81
info@acutronic-medical.ch | www.acutronic-medical.ch

EF-I 14 Intubation Fiberscope (new ergonomic design)

- > Diameter: 3.9 mm
- > Working length: 600 mm
- > Biopsy channel: 1.4 mm
- > Bending section: up 130° / down 180°
- > Field of view: 110°
- > Depth of field: 1 – 50 mm

EF-I 14 Intubation Fiberscope without working channel

- > Diameter: 3.9 mm
- > Working length: 600 mm
- > Biopsy channel: --
- > Bending section: up 130° / down 180°
- > Field of view: 110°
- > Depth of field: 1 – 50 mm

EF-B Leakage tester
to ACUTRONIC bronchoscopes
Part no. > 130 099 012

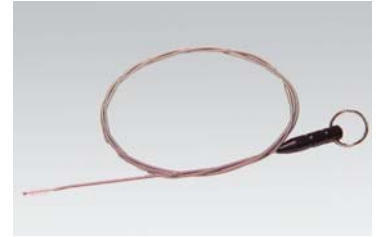


Cover for biopsy channel

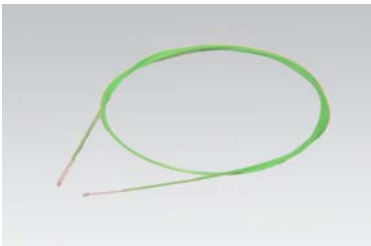
Part no. > 1926



Cleaning brush Ø 2 mm
for working channel 1.4 mm
reusable, length: 1100 mm
Part no. > 2542



Double cleaning brush Ø 1.8 mm
for working channel 1.4 mm
Single use, length: 1000 mm
Part no. > 3985



Irrigation tube
for EF-BI / EF-PB Series
for biopsy channel
Part no. > 2523



Stop cock for suction

Part no. > 3920

Adapter for leakage tester,
type OLYMPUS/ACUTRONIC

Part no. > 3921

Battery light source LED
With click connector
Part no. > 3996



Light cable
length 1.8m, Ø 3.5 mm
Part no. > 1919



Adapter for light cable
to ACUTRONIC bronchoscopes
Part no. > 2087



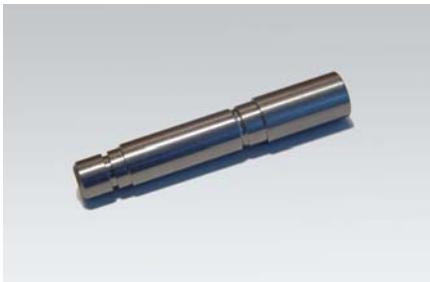
Wolf adapter for light connector
to ACUTRONIC bronchoscopes
Part no. > 2084



Adapter for ACUTRONIC Light Cable
suitable to STORZ Light Source
Part no. > 2072



Adapter for ACUTRONIC Light Cable
suitable to WOLF Light Source
Part no. > 2073



Adapter for ACUTRONIC Light Cable
suitable to FUJION Light Source
Part no. > 2074



Adapter for ACUTRONIC Light Cable
suitable to ACUTRONIC Light Source
Part no. > 2075



Adapter for ACUTRONIC Light Cable
suitable to OLYMPUS Light Source
Part no. > 2076



Adapter for ACUTRONIC Light Cable
suitable to ACM Light Source
Part no. > 2205



Video Trolley

Available in various configurations.

Ask for further information.



ACUTRONIC Medical Systems AG

Fabrik im Schiffli | 8816 Hirzel | Switzerland | Phone ++41 44 729 70 80 | Fax ++41 44 729 70 81
info@acutronic-medical.ch | www.acutronic-medical.ch